



# IMPACTO®

[www.impacto.ca](http://www.impacto.ca)

Impact  
Vibration  
Repetitive Strain  
Cumulative Trauma  
Heat & Slash  
Puncture  
Abrasion  
Fatigue



## Ergonomic Catalogue



## IMPACTO® Protective Products Inc.

### HEAD OFFICE

Impacto Protective Products Inc.  
PO Box 524, 40 Dussek Street  
Belleville, Canada K8N 5B2

Tel 613 966 0062

Fax 613 966 0067

N. America 888 232 0031

U.K. Free Call 0800 0280 243

E-mail: [impacto@impacto.ca](mailto:impacto@impacto.ca)

[www.impacto.ca](http://www.impacto.ca)

ISO 9001:2008 Certified



## IMPACTO PROTECTIVE PRODUCTS INC.

... is a privately owned Canadian company that serves the exclusive needs for worker safety. We have been manufacturing and marketing specialized personal protective equipment since 1986. Our stakeholders include safety groups, engineering staff, medical personnel, unions, management and most importantly frontline workers. By interacting with these groups, we are able to provide a solution that incorporates ergonomic work design, protective clothing and employee training.

To date, we've sold millions of gloves to companies in North America and around the world. We have distributors and affiliations with other International injury prevention experts to advise us in many specialty areas. We carry an extensive line of premium products, which include gloves for both impact and vibration. Impacto also offers wrist supports, insoles, kneepads, back supports, ergonomic seating, foot protective products and other ergonomic body protection.

In providing services to our clients, we are strongly guided by a few basic principles:

- **Outstanding Product Performance** - In terms of protection, prevention and comfort
- **Quality Solutions for your needs** - Only by thoroughly understanding your unique situation, can we deliver lower Worker's Compensation costs and better protection for your employees
- **Customized Solutions** - We will design a new product that meets your requirements; we develop prototypes and produce small runs at the appropriate level of need
- **No-nonsense services** - From first contact to plant evaluations to information services to designing new products; we'll work closely with you at a level that is comfortable for you
- **Client partnership** - Lowering Worker's Compensation Claims by successfully preventing injuries requires close cooperation between us and our clients; working together, we can both be successful

## IMPACTO® QUALITY POLICY

We are committed to developing innovative new products to provide protection from vibration, impact and repetitive motion. We are committed to:

- Customer satisfaction
- Continual improvement of our products, processes and Quality Management System
- Expanding our markets by developing new, specialized personal protective equipment
- Optimizing employee participation in product improvement and customer service
- Employee training and enhancement of the workplace environment
- Compliance with stated quality requirements as documented in our Quality Management System based on ISO 9001:2008

<b>ANTI-VIBRATION AIR GLOVE</b>	About the Air Glove	4
	Leather Air Gloves, Air Liners	5
	Coated Air Gloves, Anti-Slash, Fitter's, Blackmaxx Anti-Vibration	6
<b>ANTI-IMPACT GLOVES</b>	About Viscolas VEP Padding	7
	Anti-Impact Gloves: 400 Series/Pearl Leather Gloves	8
	Anti-Impact Gloves: 500 Series/Fingerless Gloves	9
	Anti-Impact Gloves: 600 Series/Full Finger, 700 Series/Wrist Support	10
<b>WRIST SUPPORTS</b>	About Wrist Supports, Elastic, Leather	11
<b>OTHER HAND PROTECTORS</b>	Air Flex, Tennis Elbow Supports, Anti-Fatigue Gloves, Carpal Control	12
	Dry Rigger's, Work Gloves, Carpal Tunnel Gloves	13
	Hand Exercisers, Mallets, Texting Gloves, Finger Guards	14
<b>ANTI-VIBRATION GRIP KITS</b>	Gripkits, Orthex Tool Wraps, Gripmaster, Viscolas sheeting	15
<b>THERMO WRAPS</b>	Therapeutic Supports	16
<b>KNEE PADS</b>	About Knee Protection	17
	Foam Knee Pads	18
	Gel Knee Pads	19
<b>MATS &amp; CUSHIONS</b>	Comfort Mats, Standing Mat, Handy Mat	20
<b>INSOLES</b>	Airsol, Cush'n Step, Impactosol, Nusol	21
	Viscolas Insoles, Heel Cushions, Orthotic Components	22
	Rhinotuff, LiquaCare, MegaComfort	23
<b>FOOT PROTECTORS</b>	Steel Toe Caps Turbotoe & Impactoe, Metatarsal Guard Metguard	24
<b>BODY PADS</b>	Arm, Shoulder, Torso Protection	25
	Sitting Mats, Anti-Vibration Cushions, Thigh, Shin, Seat Mount	26
	Padded Vests for Educational and Institutional Workers	27
<b>SLASH/HEAT PROTECTORS</b>	Forearms, Sleeves, Aprons, Jackets, Shin	28
<b>BACK SUPPORTS</b>	About the Air Belt	29
	Air Belt Lumbar Supports	30
<b>BACK &amp; NECK SUPPORT</b>	Back Coach, Thermo Back, UPGUARD Neck Support System	31

## GLOVE SIZING

Glove Size	Hand Size	Hand Circumference
XS (XSmall)	6	6" - 7"
S (Small)	7	7" - 8"
M (Medium)	8	8" - 9"
L (Large)	9	9" - 10"
XL (XLarge)	10	10" - 11"
XXL (XXLarge)	11	11" +

To determine glove size, measure the hand circumference across the knuckles at the base of the fingers. For gloves with wrist support, use glove sizing.

When ordering it is best to order smaller than your normal size. Larger sizes are custom and are available as requested.

To order, simply use the Model# followed by the size and unit of measure, PR (pr), LH (left hand), RH (right hand).

## ABOUT CE COMPLIANCE

IMPACTO products are manufactured with the highest quality materials, designs and processes to meet the user's optimum comfort and protection. We spend considerable time and effort in developing quality protective equipment that is in conformance with safety international standards.



# # # #

ANSI / ISO 10819

All products carrying the CE symbol meet the strict safety European guidelines for Personal Protective Equipment. Gloves are in compliance with EN 420 General Requirements for Gloves.

Gloves with symbol are in compliance with EN 388 Protective Gloves Against MECHANICAL RISKS. The First Number identifies the performance level for abrasion resistance, The Second Number is blade cut resistance, The Third Number is tear resistance, The Fourth Number is puncture resistance.

Gloves with this "ANSI / ISO 10819" symbol are in compliance with International Anti-Vibration Glove Standard EN ISO 10819:1996 and N. America ANSI S2.73-2002 (R 2007) / ISO 10819:1996.





### Anti-Vibration Glove Standard

International Standard EN ISO 10819:1996 ("Mechanical vibration and shock Hand-arm vibration - Method for the measurement and evaluation of the vibration transmissibility of gloves at the palm of the hand") specifies the amplitude of vibration transmissibility that must be achieved for a glove to be classified as an anti-vibration glove. The standard requires the overall transmissibility of a glove to be measured for mid frequencies ( $TR_M$  frequency range from 16-400 Hz) and for high frequencies ( $TR_H$  frequency range from 100-600 Hz).  $TR_M$  must be less than 1.0, and  $TR_H$  must be less than 0.6.

**Air Glove® Vibration test results:**  $TR_M = 0.75 < 1$   $TR_H = 0.45 < 0.6$ .

In April 2002, ANSI (American National Standards Institute) confirmed the establishment of a method to evaluate the performance of Anti-Vibration products. This standard is identical to the European International Standard **EN ISO 10819** and is identified as **ANSI S2.73-2002 (R 2007) / ISO 10819:1996**.

## ABOUT IMPACTO PATENTED AIR GLOVE TECHNOLOGY

- **Multiple air chambers** ensure optimal glove functionality and durability
- **Individual air chambers** are less susceptible to failure for long lasting wear
- **Lightweight, soft and adaptable** the Air Bladder conforms to the flex-lines of the palm and fingers minimizing grip stress and providing greater tool control
- **Non-permeable air bladder** will not degenerate or bottom out overtime
- **Durable urethane** construction provides consistent protection
- **Thin, pliable** air bladder is flexible around tool handles
- **Versatile design** can be used in a large range of styles
- **The AIR GLOVE** ensures workers have the best hand protection when using vibrating tools while still allowing maximum dexterity and tool control
- **Maximum vibration protection** when working with tools such as chipping hammers, needle guns, sanders, jackhammers, rivet guns, chainsaws and grinders
- **AIR GLOVE US Patent No. 7,865,969**

### IMPACTO Vibration Protection

Hand-Arm Vibration Syndrome, HAVS and repetitive trauma associated with excessive vibration is a significant health problem in industries affecting millions of workers. The IMPACTO AIR GLOVE reduces vibration energy transmission to the palm and fingers. The AIR GLOVE helps prevent job specific Impact and Hand-Arm vibration in the workplace while still allowing full range of motion and manual dexterity. With multiple individual air chambers, even if one chamber breaks down, the other cells ensure full glove effectiveness. The construction of the Air Bladder allows for glove design flexibility and can be placed in most glove styles. IMPACTO offers the most styles of ANSI certified gloves in the market.



#### #BG408

Designed for maximum comfort, dexterity and safety. Used with vibrating power tools such as grinders, chipping hammers, trimmers, road breakers, sanders and chainsaws. Air technology protects the palm, thumb and fingers.

Synthetic Suede leather provides excellent wear and flexibility. Textured patches on palm and finger tips ensure superior gripping. Adjustable wrist tab with hook/loop closure. Mesh back allows hand ventilation. Machine washable.

#### MECHANIC'S STYLE

UOM: PR

S - XXL

ANSI / ISO 10819



#### #BGHIVIS

Used with vibrating power tools at night or in low-light conditions. Air technology in the palm, thumb and fingers. Synthetic Suede leather provides excellent wear and flexibility.

Textured patches on palm and finger tips ensure superior grip. Reflective strips on the back of the hand and finger tips enhance visibility at night and in low light conditions. Glow in the dark wrist cuff with hook/loop closure. Bright glove mesh back allows hand ventilation. Machine washable.

#### HI-VISIBILITY MECHANIC'S

UOM: PR

S - XXL

ANSI / ISO 10819



**IMPACTO® Full Finger Air Gloves® exceed Anti-Vibration Glove standards EN ISO 10819:1996 and ANSI S2.73-2002 (R 2007) / ISO 10819:1996**



#BG401

## PEARL LEATHER SERIES

Soft leather palm side with nylon back offer great dexterity and tactile feedback. Hook/loop wrist closure is fully adjustable to ensure a comfortable fit.

Part#	Finger Style	VEP Protection	Wrist Support
BG401	1/2	Palm/fingers/thumb	
BG402	3/4	Palm/fingers/thumb	
BG413	Full	Palm/fingers/thumb	
BG471	1/2	Palm/fingers/thumb	Leather
BG471-01	1/2	Palm/fingers/thumb	Elastic
BG473	Full	Palm/fingers/thumb	Elastic
BG475	1/2	Palm/fingers/thumb/web	
BG475-30	1/2	Palm/fingers/thumb/web	Leather
BG485	3/4	Palm/fingers/thumb/web	Leather

UOM: PR, LH, RH

XS - XXL



#BG413



ANSI / ISO 10819

#BG473



ANSI / ISO 10819

#BG475-30



## ALL LEATHER

Full finger style used with vibration power tools in most construction and assembly operations. Air Bladder palm/fingers/thumb. Elasticized driver style cuff.

#BG650

#BG750 - with leather wrist support to protect from repetitive strain injuries (Inset)

UOM: PR, LH, RH

XS - XXL

ANSI / ISO 10819



Can be worn under any protective glove. Breathable, lint free jersey fabric. Air bladder protection in the palm, fingers and thumb. Leaves no lint for clean work environments..

#BG601 - full finger style

#BG505 - 1/2 finger style

## ANTI-VIBRATION AIRLINER®

UOM: PR, LH, RH

XS - XXL

ANSI / ISO 10819



Soft pearl leather palm and fingers ensure dexterity and tactile feedback. Cotton back provides breathability. Suede leather wide safety cuff.

#BG690

## PEARL LEATHER

UOM: PR, LH, RH

XS - XXL

ANSI / ISO 10819





## NITRILE COATED

Ultimate dry gripping Nitrile coated fabric provides superior dexterity, cut and abrasion resistance. Great for work in oily environments. Air bladder protects the palm/fingers/thumb. Fingers can be cut off without fraying to make this glove into an open finger style. Driver style cuff with elasticized wrist offers great fit.

UOM: PR, LH, RH

XS - XXL

ANSI / ISO 10819



# BGNITRILE



# BG600  
gauntlet safety cuff

# BG610  
knit elastic cuff

## NITRILE DIPPED

Solvent and chemical resistant Nitrile provides excellent grip and barrier in oily environments. Cut and abrasion resistance, excellent dexterity. Air bladder in the palm, fingers and thumb.



UOM: PR

S, M, L/XL

ANSI / ISO 10819



# BG620  
gauntlet safety cuff

# BG630  
knit elastic cuff

## RUBBER DIPPED

Liquid resistant rubber dipped glove offers outstanding grip when working with water. Superior abrasion protection. Air bladder palm/fingers/thumb.



UOM: PR

S, M, L/XL

ANSI / ISO 10819



# BG790-00  
all KEVLAR® 4232

# BG790-40  
with soft pearl leather cover on the palm, thumb and index finger (photo) 2222

## ANTI-SLASH ANTI-VIBRATION

Made of knit 100% KEVLAR®. Safety cuff made of 100% KEVLAR®. Protects from abrasion, vibration, heat and slash.



UOM: PR, LH, RH

XS - XXL

ANSI / ISO 10819

## ANTI-VIBRATION BLACK MAXX™

Offers a cost effective solution for vibration protection. Nylon/cotton knit seamless material ensures stretch and breathability. Coated with "pods" of lightweight cellular Chloroprene. Uses encapsulated air to cushion and dampen vibration giving the user optimum dexterity with a lightweight feel.



## BLACKMAXX

Economical design

# 4731 (M)

# 4732 (L)

# 4733 (XL)

## BLACKMAXXPRO

Better protection from vibration, ANSI/ISO Certified

# 4737 (M)N

# 4738 (L)N

# 4739 (XL)



UOM: PR

M, L, XL

ANSI / ISO 10819

## FITTER'S STYLE



Cotton back for breathability. Reinforced stitching ensures durability. Cotton safety cuff.

# BGFITL - soft pearl leather palm &amp; fingers

# BGFITS - suede leather palm, thumb &amp; index

UOM: PR

M, L, XL

ANSI / ISO 10819



**ABOUT IMPACTO® VISCOLAS® VEP PADDING**

VEPs are solids that mimic the behavior of liquids, which allows dissipation of shock waves better than any other material. The "solid-liquid" nature of VEP absorbs shock waves in all directions at once, reforming to its original shape at a rate that is slow enough so as not to exert outward pressure that could cause reverberations, but fast enough to regain its original shape before the next shock. In laboratory tests, VEP has proven its ability to absorb up to 500% more shock than foam of the same thickness.

The unique manner in which VEP dissipates impact energy, makes it an ideal material for the improvement of health and safety in industry and commerce. Every year, hand and arm injuries caused by repetitive shock cost industry millions of dollars in health care. Musculoskeletal injuries have been identified as the most frequent type of workplace injury.

**OUTER FABRIC**

4-Way stretch Polycotton provides excellent stretch and breathability. Nylon Lycra® for comfort, dexterity and moisture evaporation.

**ABRASION PROTECTION**

Gloves are available without leather for use in delicate operations or inside work glove or with leather cover for better abrasion protection. Suede leather ensures best grip. Grain leather is smooth and provides longer wear. Pearl leather is soft and ensures better dexterity.

**WRIST CUFF**

Available in easy to wear slip-on or open cuff; Elastic wrist with adjustable hook/loop closure; Elasticized driver style wrist for comfort and; Gauntlet/Safety cuffs.

**PADDING**

Contoured Viscolas VEP padding can be found in or in combinations of multiple places on the hand: palm, back of hand, fingers, thumb web area. Typical thickness of 1/8" (3 mm) provides excellent shock absorption and impact dissipation. Also available in 3/16" (4.5 mm) and 1/4" (6 mm) thickness for specialty applications.

**FINGER STYLES**

Available in Fingerless, 1/2, 3/4 and Full fingers. Open finger gloves ensure full dexterity and tactile feedback. Full finger gloves provide maximum protection.

# 501-00

**THE "ORIGINAL" GLOVE LINER**

- The 1st IMPACTO glove designed and still #1 seller
- Contoured Viscolas VEP padding in the palm
- Four-way stretch polycotton Lycra allows full mobility and offers excellent breathability
- Ideal for work in warm environments or as a liner under specialty work glove

UOM: PR, LH, RH

XS - XXL



2521



## PEARL LEATHER IMPACT GLOVES

Part#	Fingers	VEP Padding	Wrist Support
401-30	1/2	Palm	-
403-30	Full	Palm	-
409-30	1/2	Palm/thumb/index	-
413-30	Full	Palm/fingers	-
423-30	Full	-	-
471-30	1/2	Palm	Leather
471-31	1/2	Palm	Elastic
473-30	Full	Palm/fingers	Elastic
473-31	Full	Palm/fingers	Leather
475-30	1/2	Palm/fingers/web	Leather
475-31	1/2	Palm/fingers/web	Elastic
485-30	3/4	Palm/fingers/web	Leather
485-31	3/4	Palm/fingers/web	Elastic
479-31	3/4	Palm/thumb/index	Elastic

UOM: PR, LH, RH

XS - XXL



# 403-30



# 401-30

The pearl leather on the 400 series allows for optimum manual dexterity. The nylon back allows stretch and are breathable. Used in applications where tactile feedback and dexterity is important.

# 473-30



RSI

# 475-30



RSI

# 479-31



RSI

# 400-00



## GEL WORK GLOVE

Half finger, gel palm pad protects from impact. Leather palm with nylon back. Terry cloth back to wipe away sweat. Adjustable wrist tab, hook/loop closure.

UOM: PR

XS - XXL



# AV408



## MECHANIC'S IMPACT GLOVE

Full finger, VEP pad protects the palm. Flex lines offer great dexterity for manual jobs and tool handling. Synthetic suede leather palm, spandex back, adjustable wrist tab with hook/loop closure.

UOM: PR

S - XXL



# 404-30



## BUNDLER'S / TYING GLOVE

Nylon back, pearl leather palm, VEP pad in the palm extended to the ulnar side. Used for tying cords or wrapping ties around cables, wires, hoses, copper tubing etc.

UOM: PR

XS - XXL



## SPLIT PALM PADDING



Half finger style allows full tactile feedback, breathable nylon mesh back, soft pearl leather palm, split design palm padding, adjustable hook/loop wrist closure.

# 410-30



UOM: PR, LH, RH

XS - XXL



## CONSTRUCTION GLOVE

# 450-30



Half finger, all heavy pearl leather, pad in palm & base of fingers, hook/loop wrist closure.

# 460-30

# 450-30 - without thumb



UOM: PR, LH, RH

XS - XXL





Open finger gloves provide maximum dexterity, cushioning and abrasion protection. Used with manual or electric tools. Viscolas VEP padding (1/8" / 3 mm) offers excellent impact protection.

## FINGERLESS IMPACT GLOVES

UOM: PR, LH, RH

XS - XXL



Part#	Fabric	Fingers	Leather	VEP Padding	
501-00	Polycotton Liner	-	-	Palm	2521
501-10	Nylon	-	Suede	Palm	4144
501-20	Nylon	-	Grain	Palm	2131
501-35	Nylon	-	Pearl	Palm to wrist	2111
502-00	Polycotton Liner	-	-	Palm/web	4144
502-10	Nylon	-	Suede	Palm/web	4144
502-20	Nylon	-	Grain	Palm/web	2131
505-00	Nylon Liner	3/4	-	Palm	
505-10	Nylon	3/4	Suede	Palm	4144
505-20	Nylon	3/4	Grain	Palm	2131
510-00	Polycotton Liner	-	-	Palm to wrist	2521
525-00	Nylon Liner	3/4	-	Palm/fingers/web	
525-10	Nylon	3/4	Suede	Palm/fingers/web	4144
525-20	Nylon	3/4	Grain	Palm/fingers/web	2131



#502-20



#506-20

### ALL LEATHER

3/4 finger, padded palm, fingers and thumb, nylon with durable grain leather front and back, finger gussets for comfort.



2131

UOM: PR, LH, RH

S, M, L/XL



#507-01

### PALM & BACK PROTECTION

3/4 finger in nylon for use under work glove, 3/16" waffle pad in front and back of the hand and fingers. Great for confined spaces to protect the back of the hand.

UOM: PR, LH, RH

XS - XXL



#501-04

### KNIFE HANDLING

Polycotton glove liner, VEP padding in the thumb web area provides cushioning and abrasion protection. Used for knife handling in poultry and meat processing.

UOM: LH, RH

XS - XXL



## FINGERLESS GLOVES WITH SIDE OF THE HAND PROTECTION

#503-10



Typically used in automotive and assembly for tasks where the hand is used as tool. Trim, moulding, windshield installation, urethane seal, door panel installation, provides cushioning, impact, abrasion and bruising protection.

Part#	Fabric	Leather	VEP Padding	Pad Thickness	
503-00	Polycotton liner	None	Palm/side/back	1/8" / 3 mm	2521
503-10	Nylon	Suede	Palm/side/back	1/8" / 3 mm	4144
503-20	Nylon	Grain	Palm/side/back	1/8" / 3 mm	2131
503-14	Nylon	Suede	Palm/side/back	1/4" / 6 mm	4144
523-14	Nylon	Suede	Palm to wrist/side	1/4" / 6 mm	4144
523-24	Nylon	Grain	Palm to wrist/side	1/4" / 6 mm	2131

UOM: PR, LH, RH

XS - XXL





# 611-00

- # 601-00 - padded with VEP in palm & fingers
- # 602-00 - pad in the fingers to relieve pressure point from use of scissors or shears
- # 606-00 - neoprene padded back from tip of fingers to the base of the wrist used in the food and mining industry to protect the back of the hand
- # 611-00 - with pad in the palm, fingers and thumb web area

FULL FINGER POLYCOTTON LINERS

UOM: PR, LH, RH

XS - XXL



# 615-20

- # 615-20 - heavy-duty design with outer seams. 100% KEVLAR® stitching, VEP pad in the palm and fingers, suede safety cuff
- # 650-20 - with driver style cuff, VEP pad in the palm
- # 652-30 - pearl and grain leathers with reinforced palm and thumb web area, not padded, used to protect when working with rope or cables

FULL FINGER ALL LEATHER

UOM: PR, LH, RH

XS - XXL



# 704-20

# 712-02

ANTI-IMPACT GLOVES WITH WRIST SUPPORT: 700 SERIES

Viscolas VEP (1/8" / 3 mm) padding offers excellent impact protection. Leather wrist support protects from repetitive strain injuries.

Part#	Fabric	Fingers	Glove Leather	VEP Padding	Wrist Support	
703-00	Polycotton liner	-	-	Palm	Suede	2521
703-10	Nylon	-	Suede	Palm	Suede	4144
703-20	Nylon	-	Grain	Palm	Grain	2131
714-20	Polycotton liner	-	-	Palm/web	Grain	2131
704-10	Nylon	-	Suede	Palm/web	Suede	4144
704-20	Nylon	-	Grain	Palm/web	Grain	2131
706-20	Nylon	-	Grain	Palm/web/side/back	Grain	2521
712-02	Polycotton liner	Full	-	Palm/partial fingers	Grain	2521
712-23	Polycotton liner	Full	-	Palm/full fingers	Grain	2521
725-02	Polycotton liner	3/4	-	Palm/fingers/web	Grain	-
725-20	Nylon	3/4	Grain	Palm to wrist	Grain	2521



# 700-10

PADDED WRIST SUPPORT

Suede leather, continuous VEP pad on the palm and wrist support. Excellent protection in repetitive jobs. Firm support to prevent over extension and over flexion.

UOM: PR, LH, RH

XS - XXL



# 710-10

PADDED KNIT

Made with stretchy knit polyester fabric. VEP pad and suede leather protects the palm. Elastic wrist support with adjustable hook/loop closure.

UOM: PR, LH, RH

XS - XXL



# 720-20

ANTI-SLASH SUPPORT

100% KEVLAR® knit glove. Grain grain leather palm and wrist support. VEP padding in the palm protects from impact. Hook/loop closure.

UOM: PR, LH, RH

XS - XXL





## THERMO WRAP WRIST SUPPORT

Ambidextrous, multi-layered design captures body heat, increases circulation and provides compression and support. Soft lining wicks away moisture. Machine washable. Used for daily protection against repetitive strain injuries such as carpal tunnel syndrome and tendinitis. Helps prevent pain and discomfort in activities such as assembly lines, cashiers, machine operators, computer users, gardening.

**#TS226UR** - wrist support with U-Rest pad for keyboard operators

For sizing measure around the wrist at the smallest point.

**XS/S** 4.5"-6.25"/11-13 cm

**M** 6.5"-7.5"/17-19 cm

**L/XL** 7.75"-10"/20-25 cm



UOM: EA

XS/S, M, L/XL



**#TS226**

## ABOUT IMPACTO WRIST PROTECTION

Designed to help prevent over extension and over flexion of the wrist while allowing normal range of motion. Maintaining the wrist in a straight position during repetitive tasks such as keyboarding is one of the key factors to preventing Repetitive Strain Injuries (RSI) such as Carpal Tunnel Syndrome (CTS) and Tendonitis. Exercise and over-all conditioning are also helpful in the prevention and treatment of RSI.



**#715-00**

### NEOPRENE WRIST WRAP

Ambidextrous, comfortable, lightweight neoprene wrist wrap. Plastic stays on dorsal and palm side offer additional support.



UOM: EA

XS - XL



**#EL420**

### UNIVERSAL WRIST WRAP

Ambidextrous wrist protection. Foam padded with vinyl outer cover and breathable mesh lining. Adjustable elastic strap with hook/loop closure.



UOM: EA

ONE SIZE



## ELASTIC WRIST SUPPORTS

**#EL40**



Adjustable elastic strap with hook/loop closure. Cotton lining wicks away moisture. Plastic spiral stays ensures flexibility. Durable support stays limit wrist flexion while still allowing normal movement to work productively.

**#EL40** - single strap, palmer stay, sold left or right

**#EL41** - double strap, palmer and dorsal stays, left or right

**#EL42** - single strap, palmer & dorsal stays, ambidextrous. Can be used as a light wrist splint to keep wrist from moving



UOM: EA

S - XL



## LEATHER WRIST SUPPORTS

**#701-00**



Fingerless glove, not padded. Leather wrist supports provide everyday protection from RSI without impeding natural mobility.

**#701-00** - polycotton glove liner, suede leather wrist support

**#701-10** - nylon glove with suede leather palm and wrist support

**#701-20** - nylon with grain leather palm and wrist support

**#705-20** - nylon glove without fingers, grain wrist support



UOM: PR, LH, RH

XS - XXL



## AIR FLEX CARPAL TUNNEL SPLINT

Inflatable air chamber system with self-contained aspirator. Durable nylon outer cover, moisture absorbing inner lining with neoprene straps. Adjustable hook/loop closure. Rigid, plastic stays on dorsal side. Minimizes pressure on the carpal tunnel and median nerve. Provides Therapeutic support for pre-existing conditions. Provides compression and comfortable support.

For sizing measure around the wrist at the smallest point.  
**S** 4.5" - 5.5", **M** 6.5" - 7.5", **L** 7.5" - 8.5", **XL** 8.5" - 11"

**RSI**

UOM: LH, RH

S - XL

CE



# AFPLUS

## TENNIS ELBOW SUPPORT



Reduces pain from tendonitis of the elbow caused by repetitive motions. Inflatable air chambers with self-contained aspirator. Soft foam padded shell with pocket for air chamber. Adjustable strap with hook/loop closure.

# AIRELBOW

**RSI**

UOM: EA

ONE SIZE

CE



Soft neoprene construction, soft with full stretch and adjustment. Padding applies pressure to the affected area to help reduce pain and discomfort.

# EL5002

**RSI**

UOM: EA

S - XL

CE

## ANTI-FATIGUE THERMO GLOVES

Snug fitting glove, the neoprene construction helps maintain body heat, massages as it supports, relieving stress & strain. Great for repetitive jobs such as sewing or inside work glove to keep the hands warm. Machine washable.

**# 785-00** - Half finger, detachable elastic wrist support

**# 585-00** - without wrist support

# 785-00



Open finger tips ensures tactile feedback. Protects the hand and fingers from strain and fatigue when doing repetitive tasks. Lining wicks away moisture. Keeps hands warm providing therapeutic support and compression. Hook/loop wrist closure. Machine washable.

# TS199


**RSI**

UOM: PR, LH, RH

XS - XL

CE

**RSI**

UOM: PR

XS - XXL

CE

## CARPAL CONTROL - RELIEF FROM CARPAL TUNNEL SYNDROME (CTS)


**RSI**

- Disposable device promotes the opening of the carpal tunnel by gently elongating the involved tissues
- Reduced pressure to the median nerve reduces CTS symptoms such as pain, numbness and tingling sensation
- Patented natural therapy worn while sleeping
- Enhances blood circulation to ease inflammation eliminating
- Eliminates sleep disruption due to CTS symptoms
- Hypo-allergenic, latex-free and FDA approved

**# CCLH** - left hand (pack of 7 for 1 week therapy)

**# CCRH** - right hand (pack of 7 for 1 week therapy)

### HOW IT WORKS

The gentle stretching action of the Carpal Control works while the muscles are at rest. It promotes the opening of the carpal tunnel by elongating the tissues. Improved median nerve function and circulation occurs when pressure is relieved. Symptoms such as pain, numbness and tingling sensations often subside when pressure to the median nerve is reduced.

CE



**NEW! DRY RIGGERS****OIL AND WATER RESISTANT GLOVES DESIGNED FOR THE OIL & GAS INDUSTRY**

- Ultimate hand protection for workers in oil and gas extraction & well drilling
- Help prevent hairline fractures, bruising, pinched fingers, severe cuts, abrasions & crushing injuries
- Outstanding hand and finger protection from impact and abrasion
- Designed to ensure excellent dexterity, fit and comfort

#WGRIGG

UOM: PR

M, L, XL



Heavy duty TPR on back of fingers, thumb & back of the hand protects against bruises & bumps

High-visibility yellow laminated fabric on the back of the hand repels oil & water

Heavy duty TPR padded across the knuckles

Under layer of PVC nitrile offers an extra barrier of protection in oily conditions

Durable patches in the webbing area assure long wear

Neoprene cuff offers excellent fit

Ultra Suede fabric in the palm repels oil & water

Silicone dots on the palm & fingertips provide excellent grip

**MECHANIC'S WORK GLOVE**

Protects from abrasion and trauma. Palm flex lines offer greater dexterity for manual jobs and tool handling. Synthetic suede leather palm, spandex back, adjustable wrist tab. Flexible style designed for comfort.

#WG408

UOM: PR

XS - XXL

**ANTI-SLASH WORK GLOVE**

The whole glove is 100% KEVLAR® with added layer of pearl leather on the palm and thumb. Breathable mesh back, 3" gauntlet safety 100% KEVLAR® twill cuff. Protection from slash and abrasion when working with sharp objects like metals or glass.

#AL790-40

UOM: PR, LH, RH

S - XL

**CARPAL TUNNEL GLOVE**

Utilizing patented Shock-Tek technology. Unique channel over the carpal tunnel keeps pressure off the median nerve. Clinically tested innovative Visco-Elastic Polymer (VEP) padding absorbs and dampens impact and vibration. Thin, snug fit, padding is precision-cut to prevent and eliminate bunching for maximum comfort. Used with a variety of tools and settings such as construction, packaging, material handling, assembly operations, driving and sports.

UOM: PR

S - XXXL



#ST5010

#ST5015



#ST8206



#ST8610



### EGGSERCIZER®

Ergonomically shaped resistive hand exerciser to strengthen and rehabilitate fingers hands and wrists. Latex-free, non-allergenic VEP will not crack, leak or melt. Sold individually.

- # 1804 - Extra soft (Orange)
- # 1805 - Soft (Green)
- # 1806 - Medium (Blue)
- # 1807 - Firm (Plum)



### FLEXIGRIP™ EXERCISER

Viscolas hand exerciser developed under the direction of a hand rehabilitation specialist, designed to allow anyone to perform a wide assortment of movements for reeducating muscles. It isometrically builds grip, isolates thumb or finger flexion and exercises pinch motion.

- # 4823 - soft
- # 4824 - firm



### SOFT HEAD MALLETS

Non marring for work with delicate surfaces. VEP head absorbs and dissipates shock & impact.

- # 300-00 - 11.5" plastic ergonomic handle, 2.5" x 4" head
- # 305-00 - 8" straight wood handle, 1.75" x 2.75" head
- # 306-00 - 11.5"/29cm plastic ergonomic handle, 1.75" x 2.75" head

## NEW! WINTER GLOVES FOR TEXTING



Easy access to your thumb and forefinger to allow easy texting or using touchscreens and other activities such as photography, operating bar scanners, etc. High quality PolarTech fleece fabric offers warmth with next-to-skin comfort and perspiration management. Palm and fingertip patches minimize slipping and texting interference. Elasticized wrist cuff keeps cold wind and snow out. Index & thumb pull backs with hook/loop fastening.

### # TWITTENS

UOM: PR

XXS - L



PERFECT GIFT IDEA!

## FINGER PROTECTORS



### # 1001

Tubular construction ring protector.

- # 1000 - nylon fabric
- # 1001 - polycotton

100/BAG

ONE SIZE



Protects from abrasion and bruising, grain leather and VEP pad, nylon back.

- # 101-20 - finger
- # 102-20 - thumb

UOM: DZ

S - XL



### # 200-31

Pearl leather, elastic wrist with hook/loop, VEP pad.

- # 200-31 - thumb only
- # 233-30 - thumb/index

UOM: EA

S - XL



3-finger with nylon back, pearl leather fingers, elastic wrist with hook/loop, VEP pad.

### # 202-30

UOM: EA

S - XL





## IMPACTO GRIP WRAP

- Helps dampen shock and vibration
- Improves tool control
- Used with open or close tool handles
- Provides a comfortable gripping surface
- Easy to customize, simply cut to fit tool handle and wrap
- Kit includes sheet of impact and vibration absorbing waffle VEP and 4 yards self-adhesive silicone rubber tape

ITEM	VEP
#9066	6.5" x 5" x 3/16" / 30 x 12 x 4.5 mm
#9068	6.5" x 5" x 1/8" / 30 x 12 x 3 mm
#9065	13" x 5" x 3/16" / 30 x 12 x 4.5 mm
#9067	13" x 5" x 1/8" / 30 x 12 x 3 mm
#9064	13" x 15" x 3/16" / 30 x 38 x 4.5 mm

## ORTHEX TOOL WRAPS

- Viscolas® is applied directly to the tool providing a softer, more yielding handle surface
- This design gives full flexibility of hand movement
- A layer of vibration-reducing elastomer enhances the body's own natural energy absorbing system
- Kit includes One Viscolas sheet, 1 3/4" (4.5 cm) shrink tubing for open handle tools and alternative wrap tape for closed-ended handle tools
- Kit has enough materials to wrap 3 tools

ITEM	VEP
#4711	12" x 5" x 1/4" / 30 x 12 x 6 mm
#4712	12" x 5" x 3/16" / 30 x 12 x 4.5 mm
#4713	12" x 5" x 1/8" / 30 x 12 x 3 mm

## GRIP MASTER SINGLE TOOL WRAP

- Vibration dampening tool wrap
- Has an extra layer of super soft, non-slip padding to help reduce an even greater vibration frequency range
- Peel and stick backing allows application in two simple steps
- One size only, one kit per tool

ITEM	VEP
#4720	12" x 5" x 1/4" / 30 x 12 x 6 mm

## VISCOLAS SHEETING

- Viscolas® sheets available in a variety of sizes
- Can be cut with scissors to form custom orthotic components or cut into strips for bumpers or padding
- Can also be die-cut for glove pads, isolation units, gasket materials, etc

ITEM	VEP
#0660	12" x 5" x 1/4" / 30 x 12 x 6 mm
#0661	12" x 5" x 3/16" / 30 x 12 x 4.5 mm
#0662	12" x 5" x 1/8" / 30 x 12 x 3 mm
#RP0301E	13" x 15" x 3/16" / 30 x 28 x 4.5 mm
#RP0300E	13" x 15" x 1/8" / 30 x 28 x 3 mm





#TS226

## THERAPEUTIC SUPPORTS

Repetitive Strain Injuries - RSIs are an everyday concern in the workplace and can include everything from tendonitis to lower back strain. IMPACTO® THERMO WRAPS provide natural heat therapy for prevention, treatment and rehabilitation of injuries, arthritic pain and repetitive strain. THERMO WRAPS captures body heat, increase circulation and provide compression and support. Designed with durable materials with reinforced stitching to ensure long lasting wear. Multi-layered design with soft lining that wicks away moisture and helps prevent skin irritation. Machine washable. THERMO WRAPS are worn directly against the skin. Other styles available for complete body protection.



Wrist / Hand support  
#TS214 (LH), #TS215 (RH)



Wrist Support  
#TS216



Carpal Tunnel Brace  
#TS242 (LH), #TS243 (RH)



Tennis Elbow Support  
#TS205



Elbow Padded  
#TS212



Elbow support  
#TS217



Elbow Support w/strap  
#TS228



Shoulder support  
#TS230



Support with cutout patella  
#TS209



Standard knee support  
#TS208



Patella tracking Stabilizer  
#TS866



Ankle Support  
#TS204

BODY PART	X-SMALL	SMALL	MEDIUM	LARGE	X-LARGE	XX-LARGE
ANKLE Measure around joint of ankle	8¼" - 8½" 21 - 22 cm	8¾" - 9½" 23 - 24 cm	9¾" - 10" 24 - 25 cm	10" - 10½" 25 - 27 cm	10¾" - 11" 27 - 28 cm	11" - 11½" 28 - 30 cm
ELBOW Around elbow joint, arm extended	7½" - 8¾" 18 - 22 cm	9" - 10¼" 23 - 26 cm	10½" - 11¾" 27 - 30 cm	12" - 13¾" 31 - 35 cm	14" - 15¾" 36 - 40 cm	16" - 17¾" 41 - 45 cm
KNEE Measure around under knee cap	10¼" - 11¾" 26 - 30 cm	12" - 13¾" 31 - 35 cm	14" - 15¾" 36 - 40 cm	16" - 17¾" 41 - 45 cm	18" - 19¾" 46 - 50 cm	20" - 21¾" 51 - 55 cm
SHOULDER Measure around expanded chest	33" - 35" 84 - 89 cm	S / M 35¼" - 40¼" 90 - 102 cm		L / XL 40½" - 47¼" 103 - 120 cm		47¾" - 51½" 121 - 131 cm
TENNIS ELBOW Measure around elbow joint	8¼" - 9" 21 - 23 cm	9¼" - 10½" 24 - 27 cm	11" - 12¼" 28 - 31 cm	12½" - 14¼" 32 - 36 cm	14½" - 16½" 37 - 42 cm	16¾" - 18¾" 43 - 48 cm
WRIST / HAND Measure around wrist joint	4½" - 5¼" 11 - 13 cm	5½" - 6¼" 14 - 16 cm	6½" - 7½" 17 - 19 cm	7¾" - 8¾" 20 - 22 cm	9" - 10" 23 - 25 cm	10¼" - 11¼" 26 - 29 cm

Using the correct size is essential for effective results. Before buying, check size, measurement instructions and application. All Thermo Wraps should fit snug and comfortably, not too tight, not too loose. If in doubt try the next larger size. To ensure effectiveness, Thermo Wraps must be worn directly against the skin. Other styles available.



## THE "ORIGINAL"

Form fitting, durable molded design. Co-Polymer padding provides excellent knee protection. CoolMax® lining wicks away moisture. Ribbed kneeling surface helps prevent slipping. Lightweight and comfortable all day protection.

#840-00 - with single elastic strap and hook/loop closure

#840STRAP - replacement elastic straps

UOM: PR or CASE 40

ONE SIZE



## LIGHTWEIGHT

Molded Co-Polymer foam padding provides everyday knee protection against bruising and other knee trauma. Removable single elastic strap with hook/loop closure.

#830-00

UOM: PR or CASE 48

ONE SIZE



## EXTENDED KNEE

Molded foam padding extended for additional protection, double straps.

#845-00 - removable elastic straps with hook/loop closure

#845-01 - with side release plastic buckle closure

#845STRAP - replacement elastic straps

UOM: PR or CASE 30

ONE SIZE



## ABOUT KNEE PROTECTION

Continuous pressure on the knee due to working in a kneeling position may lead to chronic conditions, such as bursitis over the knee cap or injury to the cartilage. Excessive pressure can cause problems such as knee burn pain, fluid build up, tissue swelling, loose joints and associated arthritic conditions. Major knee damage will occur when combining existing trauma with prolonged pressure and irritation along with turning and twisting motions. The use of knee pads is an effective way to reduce the occurrence of knee injuries. Knee pads protect against injuries and inflammation caused by hard surfaces, pieces of gravel and similar objects on ground. The wide range of IMPACTO® Knee Pads provide a viable solution to workers to help prevent knee injuries and the onset of cumulative trauma to the knee.



## HARD SHELL KNEE PROTECTION

- Co-Polymer foam padding provides excellent knee protection
- Kneepad bends with the knee for comfort and flexibility
- Flat kneeling surface provides stability when working
- Ribbed kneeling surface helps prevent slipping
- Lightweight and comfortable all day protection
- Helps prevent knee and hip joint stress
- CoolMax® lining wicks away moisture

#825-00 - with removable double elastic straps and hook/loop closure

#825-01 - with side release plastic buckle closure

#825STRAP - replacement elastic straps

UOM: PR or CASE 30

ONE SIZE



DIN 14404

**NYLON COVER**

Molded foam padding, removable nylon cover prevents marring and scratching. Attached dual elastic straps with hook/loop closure.

**# 850-00****UOM: PR or CASE 24****FIRE RETARDANT**

Molded Co-Polymer padding provides excellent protection, Proban® removable outer cover helps prevent marring delicate surfaces. Dual elastic straps with hook/loop closure.

**# 852-00****UOM: PR or CASE 24****HARD SHELL  
FIRE RETARDANT**

Proban® removable outer fabric with Co-Polymer padding. Hinged action hard shell cap with flat surface for stability, dual elastic straps with hook/loop closure.

**# 877-00****UOM: PR or CASE 20****DIN 14404****GEL HARD SHELL  
FIRE RETARDANT**

Proban® removable outer fabric. Firm foam padding with Honeycomb GEL centre provides maximum protection. Hard shell cap, dual elastic straps.

**# 879-00****UOM: PR or CASE 20****HEAT RESISTANT**

Molded rubber, snug, quick fitting design, heavy duty protection, heat resistant. Great for use in wet environments, elastic straps with hook/loop closure.

**# 880-00****UOM: PR or CASE 16****LEATHER**

Nitrogen Injected Co-polymer padding. Instant comfort. Removable leather cover. Single webbing bottom strap with plastic quick release fastener. Strong saddle leather, ideal for when heat is a concern.

**# 870-00****UOM: PR or CASE 24****LIQUID RESISTANT**

Flexible molded rubber shell with sealed foam lining, accordion top cover, patterned surface, removable rubber straps and buttons.

**# 860-00****# 860STRAP****UOM: PR or CASE 24****MOLDED RUBBER**

Anti-slip ribbed surface. Easy on/off replaceable rubber 1" adjustable straps fasten to plastic buttons. Great for industrial and construction applications, heavy duty.

**# 885-00****UOM: PR or CASE 36****HARD CAP**

Foam padding with nylon top cover. Sewn-on ribbed plastic cover. Top elastic strap and bottom webbing strap with plastic side release buckle closure.

**# 826-00****UOM: PR or CASE 24****HARD CAP**

Foam padding. Nylon top cover. Plastic cover attached with grommets. Double elastic with hook/loop closure.

**# 827-00****UOM: PR or CASE 28****# 801-20****SOFT PADDED**

Viscolas padding provides impact, cushioning and abrasion protection.

**# 802-10** - pull on, suede leather**# 801-20** - pull on, grain leather**# 803-10** - suede leather cover, double elastic straps**# 803-20** - grain leather cover, double elastic straps**UOM: EA****# 803-20****NITRO FOAM**

Nitrogen injected foam padding with CoolMax® lining. Elevated Co-polymer cover fastened with rivets. Side threads acts as suction to keep knee from rocking. Double elastic straps.

**# 874-00** - short style**# 875-00** - extended cover supports the shin allowing the user to sit back on heels while working**UOM: PR or CASE 18**



## GEL KNEE COMFORT



- # 865-00 - sewn-on cover
- # 865-01 - with snap-on cover, silicone free

UOM: PR or CASE 18

ONE SIZE

DIN 14404



### BALLISTIC NYLON

Outer cover is highly resistant for most work environments

### CO-POLYMER RUBBER COVER

Prevents marring and scratching, Sewn cap helps keep debris out

### ELEVATED FACE

Improves stability & traction, absorbs shock, helps support the knee while acting like a suction cap to prevent from rocking

### SIDE TREADS

Absorb pressure around the perimeter of the knee



### HONEYCOMB GEL

Injected directly into a donut shaped pad to provide comfortable knee cushioning

### TOP STRAP

Adjustable elastic with hook/loop closure for easy fastening

### LOWER STRAP

Wide mesh elastic strap provides breathability and helps reduce bunching with hook/loop closure

### INNER LINING

Wicks away moisture for comfortable wear

### HEAVY DUTY BINDING

Assures long lasting wear

### EXTENDED HEEL

Supports the shin, helps distribute body weight reducing stress on the ankles and back discomfort



100% PVC-FREE



# 864-00



Sewn-on cover, GEL padding provides maximum comfort and knee protection. Breathable nylon mesh covers the padding. Double elastic straps with hook/loop closure. Elevated face with extended threads.



UOM: PR or CASE 24

ONE SIZE

DIN 14404



# 863-00



Nylon outer cover is ideal for delicate surfaces such as hardwood floors and tiling. GEL padding helps disperse pressure. Solid webbing strap with quick-clip-release fastening system on the bottom. Elastic top strap with hook/loop.



UOM: PR or CASE 30

ONE SIZE



# 876-00



Co-polymer rounded cover easily slides on smooth surfaces. Breathable nylon mesh covers the padding. GEL padding helps disperse pressure away from the patella bone. Dual adjustable straps with hook/loop closure.



UOM: PR or CASE 28

ONE SIZE

DIN 14404



# 777-00



## GEL KNEE/SHIN PROTECTION

Gel filled padding provides maximum protection and reduces pressure directly on the patella. Padding made with injected Super Gel and foam for extreme comfort. Elevated Face Improves stability and traction, absorbs impact and helps support the knee. Patented rubber prevents marring and scratching delicate surfaces. Extended shin and heel provides maximum support to the knee, shin, and ankle. Innovative sliding lower strap easily adjusts to fit different calf sizes. Straps are positioned above and below the calf muscle to hold kneepad securely in place. Hook/loop closures.

UOM: PR or CASE 12

ONE SIZE

DIN 14404





## IMPACTO COMFORT MATS

Used for sitting, kneeling or leaning applications. Available in a variety of poly foam padding materials in varying densities for specific protection. Multiple fabric OUTER COVERS including denim, Cordura, vinyl and fire retardant Proban, for use in any environment. Mats can be customized to fit special needs and applications.

- # 970-80 - 15" x 24" x 3", Cordura
- # 970-82 - 48" x 21" x 3", Cordura
- # 970-40 - 24" x 15" x 3", Vinyl
- # 973-40 - 24" x 36" x 3", Vinyl
- # 979-10 - 12" x 15", Proban fire retardant
- # 979-11 - 12" x 24", Proban fire retardant



# 970-80



#CUD818

### TEXTURED FOAM PAD

Dense inner core material, textured surface, convenient cutaway handle, water resistant, used for sitting or kneeling, great for gardening, dimensions 14" x 15" x 1".



# WORKMAT2436

### ANTI-FATIGUE STANDING

Chemical resistant with anti-slip backing. Helps reduce the cumulative trauma disorders commonly found in the standing workplace environment. Elastic design forces muscles to move even when standing still. Ergonomically designed to provide a comfortable place to stand for long periods of time. Used in many work environments including assembly and manufacturing, factories, offices, laboratories, restaurants, workshops, schools, gas stations, airports and more. Standard size 24"x36"x 5/8" with outside 3/4" beveled edge. Other sizes available.



# KNEELPAD

### VINYL PAD

Closed cell PVC foam pad for comfortable cushioning. Vinyl coated surface is easy to clean and repels water, built-in hand shaped carrying cut out, ideal for kneeling, great for gardening, dimensions 18" x 7" x 7/8".



# MAT5050

## HANDY MAT

Resilient Closed cell PVC 1" foam rubber with built-in handle. Self extinguishing and non conductive. Does not compress set. Does not absorb liquids. Helps to reduce knee trauma and low back pain. Provides comfortable support and cushioning. Silicone-free, fully washable. Designed for severe kneeling conditions in cold/hard, steel, concrete, grating, gravel, wet surfaces, dirt/mud. Impervious to petroleum products.

- # MAT5000 - 4" x 6", single knee
- # MAT5040 - 8" x 16"
- # MAT5050 - 14" x 21"
- # MAT5030 - 18" X 36" with beveled edge with safety strip, used for standing



# MAT5030



# MAT5040



## IMPACTO ANTI-FATIGUE INSOLES

IMPACTO lightweight cellular cushioning foam Insoles. Open-cell structure engineered for greater resiliency, breathability and reducing heat build up. Top layer provides constant cushioning and even distribution of weight to protect pressure points. IMPACTO Insoles provide superior impact and shock absorption. Antimicrobial foam helps to reduce foot odor. Fully washable. All Insoles are sold per pair.

**Anti-Fatigue Insoles Absorb Shock and Impact from Heel Strike**

**Cushion and Cradle the Heel**

**Help prevent Lower Back, Foot and Leg Pain**

**Alleviate Fatigue and Discomfort**

**Available in Multiple Styles to Suit Specific Applications**

### AIRSOL™ MOLDED

CONTOURED MOLDED Style. Provide heel stability and arch support, typically used with safety and rubber boots and shoes. All day protection when walking or standing on hard surfaces for prolonged periods.

**#ASMOLD**

### IMPACTOSOL™ GEL

Flat style, Epoflex® Visco-Elastic Polymer heel to toe provides maximum shock and impact protection. Natural tackiness on the undersurface holds the insole in place to prevent slipping and bunching. Used with all types of footwear.

**#IMFLAT**

### AIRSOL™ FLAT

FULL FLAT Style. Designed to provide comfort and support for every day wear, used with dress, sports and low cut footwear.

**#ASFLAT**

### CUSH'N STEP™

Full molded style offers excellent protection when used with work boots, outer shoes and sports shoes. Soft, breathable fabric cover wicks away perspiration. Reinforced Gel heel insert provides additional cushioning and support.

**#CUSHMOLD**

### ECONOMIC FOAM

Contoured molded style. Made of Polyurethane foam with heel and metatarsal inserts insert for extra cushioning. Fabric cover wicks away moisture. One size with trim marks to customize.

**#NUSOLM** - fits USA men shoe size 7 to 12

**#NUSOLW** - fit USA women shoe size 5 to 13

AIRSOL & CUSH'N STEP SIZE INFORMATION (Shoe)

Size	A	B	C / E	D / F	G	H
USA Men			7 - 8.5	9 - 10.5	11 - 12.5	13 - 14
USA Women	5 - 6.5	7 - 8.5	9 - 10.5	11 - 12.5		
UK	1 - 3	3.5 - 5	5.5 - 7	7.5 - 9	9.5 - 11	11.5 - 12.5
Europe	33 - 36	36 - 38	39 - 40	41 - 43	44 - 45	46 - 47

IMFLAT SIZE INFORMATION (Shoe)

Size	IMFLATA	IMFLATB	IMFLATC	IMFLATD	IMFLATE
USA Men	2 - 4	5 - 7	8 - 10	11 - 13	14 - 16
USA Women	4 - 6	7 - 9	10 - 12		
UK	1 - 3	4 - 6	7 - 9	10 - 12	13 - 15
Europe	33 - 36	37 - 40	41 - 44	45 - 48	49 - 52

## VISCOLAS® HEEL PROTECTION

Viscolas visco-elastic polymer is formulated for orthopedic application. Soft Viscolas won't "bottom out" under the weight of your body or with lots of wear. Viscolas can reduce symptoms of heel strike injuries such as tendonitis and shin splints. Non-irritating, resistant to fungal and bacterial growth and can easily be cleaned with soap and water. Natural tackiness keep the product in place. Hypoallergenic, safe for direct skin contact.



### HEEL CUSHION

Effective protection from heel strike. Useful when the fit of the shoe does not allow for use of full insole or for tighter fitting shoes such as women's pumps. Heel cushions assist in the treatment of painful foot conditions. Antibacterial fabric cover.

USA INS. HCPCS CODE L3485



### HEEL SPUR CUSHION

Shock protection and pressure reduction for sufferers of calcaneal heel spurs or other acutely painful heel conditions. Removable plug allows for a cavity to be created beneath the area of greatest discomfort, while extra cushioning on the medial side of the plantar fascia provides added relief. Fabric cover.

USA INS. HCPCS CODE L3485



### BLUE DOT™ HEEL CUP

Medical-grade silicone cushion with "Blue Dot" area with softer silicone to help cushion the heel for greater comfort underfoot. The cupped design forces the fatty pad of the heel (the body's own natural defense against skeletal shock) downward for extra protection. Ideal for athletes or people who walk for long periods.

USA INS. HCPCS CODE L3485



### ORTHEX™ RELIEVER INSOLES

Made of Viscolas to cushion the shock that is created at heel strike. Surface tackiness adhesive keeps insoles in place and prevent bunching. Moisture wicking fabric cover. Protect from shock to reduce the foot, leg, and back pain experienced during the day. Also helpful to treat postoperative conditions.

USA INS. HCPCS CODE L3040



### ULTRA PERFORMER INSOLES

Closed cell foam high-profile footbeds offer a lighter-weight alternative to solid viscoelastics. Contoured molded style with moisture wicking fabric cover. Gel inserts in the heel and metatarsal area for added foot stabilization and support. Recommended for use with boots, work and athletic shoes.

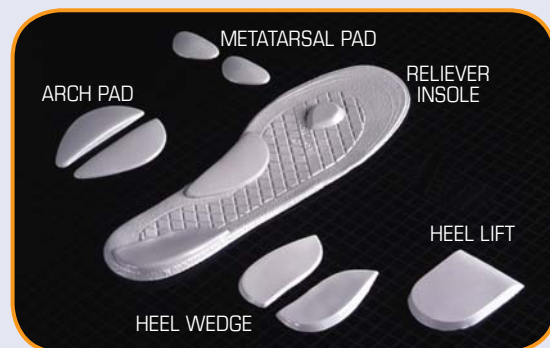
USA INS. HCPCS CODE L3040

SIZE	USA MEN	USA WOMEN	UK MEN	EUROPE	RELIEVER	PERFORMER	HEEL CUSHION	HEEL SPUR	BLUE DOT
A	2 - 4	4 - 6	1 - 3	33 - 36	#4781	#4760	#4834	#4838	#4769
B	5 - 7	7 - 9	4 - 6	37 - 40	#4782	#4761	#4835	#4839	#4770
C	8 - 10	10 - 12	7 - 9	41 - 44	#4783	#4762	#4836	#4840	#4771
D	11 - 13		10 - 12	45 - 48	#4784	#4763	#4837	#4841	#4772

## PHYSICIANS ORTHOTICS COMPONENTS

Modular Orthotic System are specialized custom orthotic components recommended for use in conjunction with the Viscolas Reliever insoles to alleviate certain painful foot conditions. Self-adhesive, components stay in place where you put them. Wide range allow flexibility to formulate immediate custom orthotic for patients requiring moderate adjustments. Combinations for therapeutic and preventive treatment are practically unlimited. Every component of the orthotic system is designed to deliver long-lasting benefits. Superior compression resistance allows Viscolas to retain its total effectiveness for long periods. The natural tackiness can be increased with an application of alcohol or decreased with a dusting of talcum powder.

USA INS. HCPCS CODE L3040



COMPONENT	INDICATIONS	S	M	L
METATARSAL PAD (Pair)	Neurotrophic feet, Metatarsalgia, Plantar fat pad atrophy, Bursitis, Capsulitis, periostitis, Painful plantar lesions, Intractable plantar keratoma, Tyloma, Interdigital neuroma, Interdigital neuroma	#4942		#4943
LONGITUDINAL ARCH PAD (Pair)	Achilles tendonitis, Plantar fasciitis, Heel pain, Iliotibial band syndrome, Foot and lower leg fatigue, Excessive pronation, Shin splints, Medial ankle pain	#4944	#4945	#4946
CORRECTIVE HEEL WEDGE (Pair)	Lateral instability, Equinus, Plantar fasciitis, Heel pain, Iliotibial band syndrome, Iliotibial band syndrome, Foot and lower leg fatigue, Excessive pronation, Shin splints, Medial ankle pain	#4999 1/8" #4976 1/4"		#4975 1/8" #4977 1/4"
HEEL LIFT (Each)	Leg length discrepancy, Equinus, Achilles tendonitis	#4985 1/8" #4997 1/4"		#4986 1/8" #4998 1/4"





## RHINOTUFF PUNCTURE RESISTANT

- Stainless steel plate provides protection against puncture wounds to the feet caused by sharp objects such as nails, scrap metal, iron shards and rock
- Meets minimum force resistance of 270 Lbs. per ASTM F2413
- Transform low-cost boots and shoes into comfortable, anti-fatigue, puncture resistant footwear for a fraction of the cost associated with high-end work boots
- Comfortable, lightweight and flexible design with moisture wicking fabric
- Heel cup and arch support offer improved foot stability to reduce fatigue and pain
- Suitable for use in all workplaces and industries including mining, construction, manufacturing, transport, storage, forestry, farming, landscaping, retail trade, airports, government facilities, shipyards, utilities, maintenance facilities, warehousing, etc

Part#	USA Men	USA Women	UK	Europe
RHINOTUFFA	5 - 6	7 - 8	4.5-5.5	37 - 38
RHINOTUFFB	7 - 8	9 - 10	6.5-7.5	39 - 41
RHINOTUFFC	9 - 10	11 - 12	8.5-9.5	43 - 44
RHINOTUFFD	11 - 12	13 - 15	10.5-12.5	45 - 46
RHINOTUFFE	13 - 15		13	47 - 49

## LIQUA® CARE THERAPEUTIC

Used for prolonged standing with most types of footwear. Liquid flows through a patented, anatomically designed control channels, ensuring directional stability walking or standing. The dynamic flow of liquid distributes body weight enabling movement of the foot muscles. This massaging action stimulates the venous pump function, reducing pressures, soreness and aching feet and providing fatigue relief and sensational comfort.

# **VIVASTEP** - without fabric cover

# **FLOWGEL** - with fabric cover

Size	USA Men	USA Women	Europe
A		4 - 5.5	35 - 36
B	4 - 5.5	6 - 7.5	37 - 38
C	6 - 7.5	8 - 9.5	39 - 40
D	8 - 9.5	10 - 11.5	41 - 42
E	10 - 11.5	12 - 13.5	43 - 44
F	12 - 13.5		45 - 46



## MEGACOMFORT™

With dual layer memory foam technology. Recommended for industrial and extra-depth footwear. Soft fabric cover wicks away moisture. Absorb shock and impact, provide maximum comfort and decrease foot, knee and back pain. Machine washable. Memory foam compresses for safe clearance in steel toe footwear. Anti-Fungal & Anti-Bacterial.

# **PAM** - Molded insoles

# **PAMESD** - ESD threads provide Electrostatic Dissipation, used with ESD footwear that meets ASTM standards

# **MEGASOLE** - Molded style with Gel cushioning in the heel and arch area

# **MEGATHOTIC** - Multiple Re-attachable 3 in 1 Orthotic Arch Supports All in One Package! Affordable alternative to custom made foot orthotics



PAM & PAMESD SIZE INFORMATION (Shoe)													
Size No.	3	4	5	6	7	8	9	10	11	12	13	14	
USA Men		4	5	6	7	8	9	10	11	12	13	14	
USA Wom.	5	6	7	8	9	10	11						
Europe	36	37	38	39	40	41	42	43	44	45	46	47	

MEGASOLE SIZE INFORMATION (Shoe)						
Size No.	3	4	9	11	13	15
USA Men		6-7	8-9	10-11	12-13	14-15
USA Wom.	5-7	8-9	10-11	12-13		
Europe	36-38	39-40	41-42	43-44	45-46	47-48

MEGATHOTIC SIZE INFORMATION (Shoe)						
Size No.	5	6	8	10	12	14
USA Men		6-7	8-9	10-11	12-13	14-15
USA Wom.	5-7	8-9	10-11	12-13		
Europe	36-38	39-40	41-42	43-44	45-46	47-48

## TURBOTOE STEEL TOE CAP

For work environments that carry risk of accidental toe damage or has a steel toe cap requirement. Perfect for visitors, temps or casual workers. Can be comfortably worn over low-heel footwear, dress shoes, running shoes and most boots. Flexible and stretchy made of pliable PVC. Tread under sole help prevent slipping. 100% waterproof, will not harden, stiffen or crack. Steel toe cap color coded for size. Sold per pair, 8 pairs per case. Steel Toe meets ASTM F2413-05 M/A/75/C/75.

Part#	Toe Color	USA Men	UK	Europe
TTXS	Grey	4 - 5	4.5 - 5.5	38.5 - 39.5
TTS	White	6 - 7	6 - 7.5	40 - 41.5
TTM	Yellow	8 - 9	8 - 9.5	42 - 43.5
TTL	Red	10 - 11	10 - 11.5	44 - 45.5
TTXL	Blue	12 - 13	12 - 13	46 - 47.5
TTXXL	Green	13 - 14	13 - 14	48 - 49.5



## IMPACTOE SAFETY STEEL TOE CAP

Steel toe cap protects the toe area from against crushing or stubbing. Fits tightly over existing shoes providing a protective solid steel cap. Made of molded injected seamless vulcanized rubber. Anti-slip sole, resistant to acid, oil, and animal fat. 100% waterproof. Will not harden, stiffen or crack. Ideal for any working environment that carries a risk of accidental toe damage or has a steel toe cap requirement. Perfect for visitors, temporary workers, management or clerical staff. Transferable from person to person.

Part#	Toe Color	USA Men	USA Women	UK	Europe
IMPACTOEXXS	Pink	5.5 - 6	7 - 7.5	5 - 5.5	36 - 38.5
IMPACTOEXS	Grey	6.5 - 7	8 - 8.5	6 - 6.5	38 - 39.5
IMPACTOES	White	7.5 - 8	9 - 9.5	7 - 7.5	40 - 41.5
IMPACTOEM	Yellow	8.5 - 9	10 - 10.5	8 - 8.5	42 - 43.5
IMPACTOEL	Red	9.5 - 11.5	11 - 13	10 - 11	44 - 45.5
IMPACTOEXL	Blue	12.5	14	12	46 - 47.5
IMPACTOEXXL	Green	14	15.5	13.5	48+

## METATARSAL PROTECTOR

The METGUARD safety footwear attachment protects the metatarsal area of the foot by deflecting and dispersing the impact of falling loads. Designed and tested to compliment steel cap footwear. The lip of the METGUARD sits on top of the steel cap at load point.

- Extremely durable, non conductive, lightweight polycarbonate material
- Secured with existing laces or optional straps to secure to non-lace up footwear such as rubber boots
- Practical safety solution, transferable between users and footwear
- Comfortable, easy to fit and simple to use
- Suitable for use in all workplaces and industries including mining, construction, manufacturing, transport, utilities, forestry, retail trade, airports, cities and municipalities, government facilities, shipyards
- Meets minimum impact resistance of 75 lbs as specified in ASTM F2413/F2412.

# **METGUARD** - sold per pair, 20 pairs per case, one size

# **METSTRAP** - optional straps for footwear without laces





## BODY PADS

Customized designs to suit specific tasks, IMPACTO body protectors provide impact, cushioning, shock absorption or pressure point protection to help prevent cumulative trauma. Typically used in maintenance, assembly and construction applications when leaning over vehicle or hard, uneven or sharp working surfaces or articles.

# 805-10



### FOREARM PROTECTOR

Breathable, stretchy polycotton, layered foam and VEP padding ensure excellent protection from impact and bruising, leather cover for abrasion.

# 805-10 - suede leather

# 805-20 - grain leather

Circumference x Length: S 8.5" x 10.5"  
M 8.5" x 11.5", L 9.5" x 11.5", XL 10.5" x 13.5"

# 811-20



### ELBOW/FOREARM

Pull-On, stretch polyester, combination VEP and foam padding offer excellent protection from bruising.

# 811-10 - suede leather cover

# 811-20 - grain leather cover

Circumference x Length: S 10"x13.5"  
M 10.5"x14.5", L 11"x15.5", XL 12"x16.5"

## ELBOW PADS

# 804-00



Pull on style, memory foam padding conforms to the natural curves of the arm, 4-way stretch breathable polycotton.

# 804-00 - removable pad, no leather

# 804-20 - grain leather cover, padding not removable

Width x Length:  
S 9" x 11.5", M 11" x 12"  
L 13" x 12.5", XL 14" x 13"

# 806-20



Layered foam & VEP pad provides maximum shock and bruising protection.

# 806-00 - without leather

# 806-10 - suede leather

# 806-20 - grain leather cover

Circumference x Length:  
S 9.5" x 6.5", M 10" x 6.5"  
L 10.5" x 6.5", XL 11" x 6.5"

# 912-80



### TORSO PROTECTION

Half-vest style protectors with size adjustments on both sides, easy release plastic buckle, one size, fits left or right side.

# 910-00 - breast/chest padded, made of breathable denim

# 910-80 - breast/chest padded, easy to clean Cordura®

# 912-80 - shoulder padded, made on easy to clean Cordura

# 913-00 - rib padded in Cordura

# 909-80



### CHEST/ABDOMINAL

Apron style, webbing waist strap with side release buckle closure. Webbing around neck loop, one size, 17" x 26".

# 909-30 - with soft pearl leather cover to prevent marring or scratching

# 909-80 - easy to clean, Cordura®

# 914-80



### ABDOMINAL PROTECTION

Cumberbund style with reinforced adjustable straps and side release buckle closure, one size.

# 914-00 - denim

# 914-30 - soft pearl leather cover to prevent marring or scratching

# 914-80 - easy to clean, Cordura®



#901-80

### CHAP STYLE SEAT PROTECTOR

Layered foam padding provides cumulative trauma protection when sitting for long periods on hard or uneven surfaces. Elastic leg straps with hook/loop closure, webbing waist belt with plastic quick release buckle closure.

#901-00 - denim

#901-80 - Cordura®

#901-81 - Cordura with suede patch

#905-10 - suede with soft grain leather patch

Sizes: S 19"x21", M 22"x24"  
L 25"x24", XL 29"x25"



### ANTI-VIBRATION CUSHION

Vinyl under side protects from grease. Breathable, soft Cambrelle® fabric top side. Memory foam conforms to the natural shape of the body to provide comfortable protection. Strap with hook/loop to affix to seat, 17" x 17".

#907-40 - single foam padding

#917-40 - double foam padding



#905-10



### GEL SEAT CUSHION

Layered open-cell foam and Gel provides excellent protection from cumulative trauma when sitting for long periods. Heavy duty nylon top cover with resilient plastic underside, 18" x 16", one size.

#907GEL

## SHIN PROTECTORS



### PULL-ON SUEDE LEATHER

Lightweight construction of knit elastic sleeve with durable suede leather front facing. Layered foam pad provides cushioning and protects from shock and abrasion, one size, 13" x 5".

#810-10



### GRAIN WITH STRAPS

Durable grain leather facing, breathable mesh lining, layered foam padding, adjustable elastic straps with hook/loop closure, one size, 13" x 5".

#821-20



### COMBINATION KNEE/SHIN

Suede leather and cotton, combined shin and knee protection, layered foam & VEP padding.

Adjustable straps with hook/loop closure, one size, 16" x 5.5".

#819-10



### THIGH PROTECTOR

Combination foam padding, adjustable webbing waist belt with elastic leg straps with hook/loop closure, 5.5" x 6.5", 1.5" thickness.

#808-00 - denim

#808-80 - Cordura®



### THIGH PROTECTOR

Foam and VEP layered padding provides excellent protection. Suede leather cover ensures great wear. Elastic straps to secure around leg. One size, 9.5" x 7."

#807-10

#817-10 - extended straps



### FORKLIFT SEAT MOUNT

Protects from continuous vehicle vibration which can contribute to back pain, cumulative trauma and repetitive strain injuries. Vibration dampening VEP with PSA adhesive backing. Positioned between the seat and the frame.

#925-00



## PROTECTION FOR PROVIDERS OF SPECIAL CARE

Designed for educational and institutional workers to prevent bruising and other trauma.

### DENIM VEST

Multi-layered removable foam padding in torso, groin and kidney area. Padded detachable neck guard. Durable denim outer fabric. Breathable fabric lining. Seam at waist ensures flexibility. Remove padding to wash, machine washable. Provides protection from bruising and other trauma. Adjustable front and side elastic straps with hook and loop closure.

**#934-01** - hook and loop front closure

**#934-02** - with front sewn together to prevent exposure of the torso area

Chest measurements	
S	35" - 37.5" / 89 - 95 cm
M	38" - 40.5" / 96 - 103 cm
L	41" - 44" / 103 - 111 cm
XL	45" - 47" / 112 - 119 cm
XXL	48" - 49" / 120 - 124 cm



### COOLMAX® VEST

Vest was designed and approved by Ontario School Boards. Available in sizes S to XXL, see chart above.

**#934-05**

#### FABRIC

Moisture wicking CoolMax® extreme black fabric has ultra soft inner lining.

#### COLLAR

Unisex style with Self-collar neck.

#### FRONT PADDING

The entire front is padded with 1/2" dense foam from the shoulder crease to the kidney area.

#### ARMS

The entire length of the arm is padded front and back. Split padding in the front of the arm facilitates mobility.

#### UNDERARMS

Mesh fabric in the underarm area ensures ventilation.

#### WRIST CUFF

Thumb hole at the wrist to keep vest in place and prevent being pulled off.

#### CLOSURE

Durable plastic front zipper.

#### LINING

Breathable mesh lining where padded.

#### BACK PADDING

The back side is fully padded. Pad can be removed if not needed.





## SLASH/HEAT PROTECTION

IMPACTO Anti-Slash & Heat Resistant line of products is available in a large range for whole body protection. Designed to provide protection from slash, cuts, abrasion and exposure to sparks in hazardous industrial situations. If you have a potentially hazardous heat or slash situation requiring customized protection, IMPACTO can design an innovative quality solution to best suit your need. Contact us for specific products to suit your worker's needs.

### ANTI-SLASH JACKET

100% KEVLAR®, twill top of the jacket and arms with continuous filament mesh body, front zipper, adjustable wrist with hook/loop. For sizing use chest measurements.

# **AL275** - grommets on sleeves nad top of jacket

# **AL275-01** - without grommets

S	M	L	XL	XXL
38" / 95 cm	42" / 107 cm	46" / 116 cm	48" / 122 cm	50" / 127 cm



### HAND/FOREARM

Double layer 100% KEVLAR® knit

# **AL251-12** - ambidextrous

# **AL251-13** - extended length, ambidextrous

# **AL251-14** - 1/8" IMPLUS pad protects the top and bottom of the arm. Order Left or Right

UOM: EA S - XL

### KEVLAR® WRIST CUFF

Double layer 100% KEVLAR® twill protects from heat and slash, elastic loop around thumb, adjustable hook/loop closure

# **AL252-03**

UOM: EA S - XL



### HIGH HEAT / SLASH

Protect fom high heat up to 800° continuous exposure.

# **HR700** - 100% KEVLAR® knit fleece glove with Nomex® interlining. 4" safety gauntlet cuff

# **HR800** - Woven Norfab® shell with heavy duty blended yarns. 14 inch length

UOM: PR, LH, RH ONE SIZE

### NYLON MESH WRIST CUFFS

# **AL252** - single layer nylon mesh, loop around thumb, hook/loop closure

# **AL253** - double layer nylon mesh protects from slash, loop around thumb, snap closure

UOM: EA S - XL



### ANTISLASH SLEEVES

100% KEVLAR® twill, joined with elastic across the back and chest, front closure with hook/loop, wrist safety cuff with hook/loop closure.

# **AL290** - with grommets

# **AL290-01** - no grommets

UOM: PR S - XL



### ANTISLASH APRON

100% KEVLAR® multi-layered quilted style, waist strap with buckle closure, adjustable straps over shoulders with hook/loop closure.

# **AL294**

UOM: PR S - XL



### SHIN PROTECTORS

# **AL256** - double layer 100% KEVLAR®, 3 elastic straps with hook/loop closures, not padded, One Size

# **AL257** - double layer 100% KEVLAR®, VEP padding, suede leather cover

UOM: EA S - XL

Measurements for finished product Circumference x Length

Size	AL251-12	AL251-13	AL251-14	AL257	AL252 / AL253
S	6"-7" x 12.5"	6" - 7" x 20"	6" - 7" x 21"	Calf 13.5"x11"	12" x 7"
M	8" - 9" x 12.5"	8" - 9" x 20.5"	8" - 9" x 21.5"	Calf 16.5"x14"	14" x 7"
L	10"-11" x 13"	10" - 11" x 21"	10" - 11" x 22"	Calf 19" x 17"	16" x 7"
XL	12"-13" x 13.5"	12"-3" x 21.5"	12"-13" x 22.5"	Calf 21" x 20"	18" x 7"



## ABOUT THE PATENTED AIR BELT® TECHNOLOGY

The Air Belt is a uniquely designed inflatable Lumbar Support that can be conveniently worn inside or outside of clothing without restricting normal mobility. Features the Patented Air Bladder System. When inflated the interconnected air chambers conform to the back applying forward pressure that supports and naturally massages to reduce muscular discomfort. The Air Belt helps to encourage proper alignment of the lower back, a key for a healthy back.

IMPACTO's patented multi-cell pneumatic Air Bladder Technology employs air as the primary element to not only effectively support but to cushion and stabilize as well. The unique design provides optimum anatomical conformance with firm supportive pressure to specific muscles. There is no restriction of blood flow or inhibition of natural range of motion. In addition, the air cells actually create a pulsing, graduated compression which massages the muscles, keeping them properly elongated and in a resting state. In this condition muscles are less prone to initial or continuous injury. Studies are available on request.

**Promotes Muscle Relaxation**

**Improves Posture Alignment**

**Naturally Supports the Lower Back**

**Helps Alleviate Pain and Discomfort**

**Available in Multiple Styles**

### DURABLE OUTER COVER

In assorted varieties to suit different applications

### INNER LINING

Wicks away moisture



### HOOK/LOOP CLOSURE

Adjustable for secure fastening

### RELEASE VALVE

Regulates air pressure for desired support and comfort

### INTERCONNECTED AIR CHAMBERS

Conform to the back to relax muscles in spasm

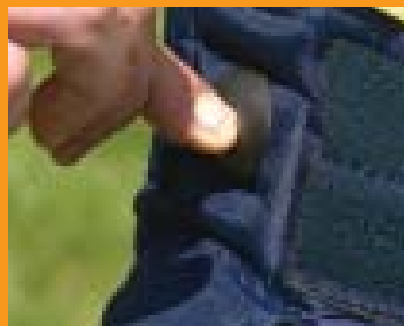
### OPEN CELL FOAM

Provides comfort and warmth

### ASPIRATOR

Attached to belt for easy access, tucks under belt for safety and aesthetics

SM, L/XL, XXL



## AIR PLUS

Durable nylon exterior with breathable lining. Extended Nylon webbing strap with hook/loop closure fits two convenient sizes. Used for general everyday back protection during work when standing or sitting for prolonged periods.

# **AP** - Lumbar support

# **SUSPENDERS** - Elastic suspenders attach at the waist with hook/loop, sold separately

USA INS. HCFA CODE L0630





### AIR TECH

Durable nylon exterior. Breathable soft lining keeps area warm. Nylon webbing front strap with hook/loop closure. For general light duty activities to promote proper sitting posture.

#### #TECH

USA INS. HCFA CODE L0630



### FIRE RETARDANT

Shell resists heat and flame. Soft foam liner for extra comfort and retention of body heat for muscle relaxation. Ideal for utilities, steel mills and petrochemicals.

#SPFR - Proban® outer shell

#SPNOMEX - Nomex® shell

USA INS. HCFA CODE L0630



### SPORT PLUS

Breathable cotton outer shell. Soft foam liner for extra comfort and retention of body heat for muscle relaxation. Fabric shell protects the belt from getting caught on objects. Great for light duty industrial and recreational use.

#### #SP

USA INS. HCFA CODE L0630



### DUAL ADVANTAGE

With the advantage of heavy duty adjustable leather belt. This reinforces the conformation of the bladder to the back providing additional support to the abdominal muscles. Robust metal roller buckle. Used where a very durable back support is needed such as mining jobs.

#### #DUAL

USA INS. HCFA CODE L0630



### COMFORT PLUS

Outer cover of soft breathable Cambrelle® fabric. Foam inner lining promotes retention of body heat and extra comfort. Padded front provides abdominal support. Fabric shell protects the belt from getting caught on objects.

#### #CP

USA INS. HCFA CODE L0630



### CONTOURED DIPBELT

Contoured design, prevents "Riding up". Extended air chambers along the back provide additional support. Soft neoprene front panels ensure additional comfort. Excellent conformance to back and hips. Ideal for women.

#### #DIPBELT

USA INS. HCFA CODE L0630



### LUMBOSACRAL

Contoured and extended air bladder provides support and stability to the sacral region. Neoprene stretch fabric in front and side panels. Moisture absorbing inner lining with durable nylon outer cover. Adjustable straps provide additional support over the lower back area. Provides maximum pain reliever for prevention or support for existing conditions.

#### #LS

USA INS. HCFA CODE L0630



## AIR TEMP ADVANTAGE

Back and abdominal support with the advantage of interchangeable Air, Cold or Heat. Two pockets which rotate off centre for additional therapeutic relief when inserting Air Chamber, Cold Compression or Heat Therapy (not included) as required. Flexible Neoprene stretch fabric in front and side panels. Breathable elastic mesh back panels. Multiple plastic support stays with non-slip strips. Adjustable elastic straps provide additional support.

#ATA - 2 air chambers included

#SUSPENDERS - Elastic suspenders attach at the waist with hook/loop, sold separately

USA INSURANCE HCFA CODE L0630



S-XXXL RSI



## BACK COACH ELASTIC BACK SUPPORT

Comfortable, non-slip back support designed for light and medium duty jobs, ideal for every day protection. Provides lower back and abdominal support. Helps prevent back discomfort. Used in many industries including retail, warehousing, manufacturing, retail and automotive.

#BC

S-XXXL



Non-slip strips on the stays help keep belt in place

Multiple plastic support stays to help support the back and align the spine

Elastic side straps when extra support is needed

Elastic mesh panels provide ventilation and comfortable fit



Elastic suspenders included. Also sold separately as replacement

#SUSPENDERS

Adjustable hook/loop closure



## THERMO WRAP BACK SUPPORT

Soft inner lining captures body heat, wicks away moisture and helps prevent skin irritation. Contoured shape and firm fit. Provides pain relief and mild compression for muscle injuries and general lower back dysfunctions. Adjustable hook & loop closure.

#TS213 - support wrap

#TS227 - with elastic side straps and stays for additional support

USA INS. HCFA CODE K0637

XS-XXL



### BACK SUPPORT SIZING INFORMATION

Size	Air Belt	#Dual	#LS & #DIPBELT	#ATA & #BC	Thermo Wrap
XS					23"-27" / 60-69 cm
S	24"-28" / 61-71 cm	28"-32" / 71-81 cm	24"-28" / 61-71 cm	24"-32" / 61-82 cm	27"-32" / 70-80 cm
M	29"-35" / 72-89 cm	33"-36" / 82-91 cm	29"-35" / 72-89 cm	32"-37" / 82-94 cm	32"-35" / 81-90 cm
L	36"-41" / 90-104 cm	37"-42" / 92-107 cm	36"-41" / 90-104 cm	36"-42" / 91-107 cm	35"-39" / 91-100 cm
XL	42"-50" / 105-127 cm	43"-48" / 108-122 cm	42"-46" / 105-117 cm	41"-48" / 104-122 cm	39"-44" / 101-112 cm
XXL	51"-56" / 128-142 cm	49"-54" / 123-137 cm	47"-52" / 118-132 cm	46"-52" / 117-132 cm	44"-48" / 113-125 cm
XXXL	57"-62" / 143-157 cm	55"-60" / 138-152 cm	53"-58" / 139-147 cm	53"-58" / 133-147 cm	

To determine sizing use waist measurement and add 2" if belt is worn over clothing.

For #LS & #DIPBELT, use hip measurement.

## UPGUARD NECK SUPPORT SYSTEM



Without the UPGUARD



With the UPGUARD

Early X-Ray studies show what is occurring within many of the neck structures with the aid of the UPGUARD.

IMPACTO® ergonomic neck support system prevents over extension helping to reduce neck pain, fatigue and injury for workers that must look-up for sustained periods. Doctor designed and approved! Helpful in rehabilitation of neck conditions.

Ideal for many activities that involve looking-up for long periods, such as mechanic, forestry, painting, plumbing, carpentry, electrical work, building maintenance, dry wall installation, operating lift trucks, working on assembly, utility workers, washing windows, automotive maintenance, general maintenance.

Lightweight molded design with soft polyurethane foam. Large capacity fire retardant straps attach to waist with metal clips for secure fastening. One size, sold as each.

#UPGUARD



WWW.IMPACTO.CA

Innovative Protection Designed for the Worker



• Gloves • Wrist Supports • Arm Protectors • Back Supports • Body Pads • Cushions • Kneepads • Insoles • Metatarsal Guard • Safety Toe Cap •



P.O. Box 524, 40 Dussek Street  
Belleville, Canada K8N 5B2  
Tel 613-966-0062 • Fax 613-966-0067  
Toll Free N. America 888-232-0031  
Free Phone UK 0800 0280 243  
E-mail: [impacto@impacto.ca](mailto:impacto@impacto.ca)

IMPACTO®, Air Glove®, AirLiner®, Air Belt®, Viscolas®, UPGUARD™, AIRSOL™, CUSH'N STEP™, IMPACTOSOL™, IMPACTOETM, Viscolas®, BLACK MAXX™ are registered trade marks of Impacto Protective products Inc. DuPont™, KEVLAR®, Cambrelle®, Lycra®, Cordura® are trade marks or registered trade marks of E.I. duPont de Nemours and Company. Proban® is a registered trade mark of Albright & Wilson. Epoflex® is a registered trade mark of Magister Corp. MegaComfort™, Personal Anti-Fatigue Mat™, MultiThotic™, MegaSole™ are trade marks of MEGACOMFORT. Lique®, Flow Gel™ are trade marks of ProBody Medical Aps. Eggsercizer®, The World's Smallest Exercise Machine® are trade marks of Eggstra Enterprises.

05/11 LCAT Printed in Canada